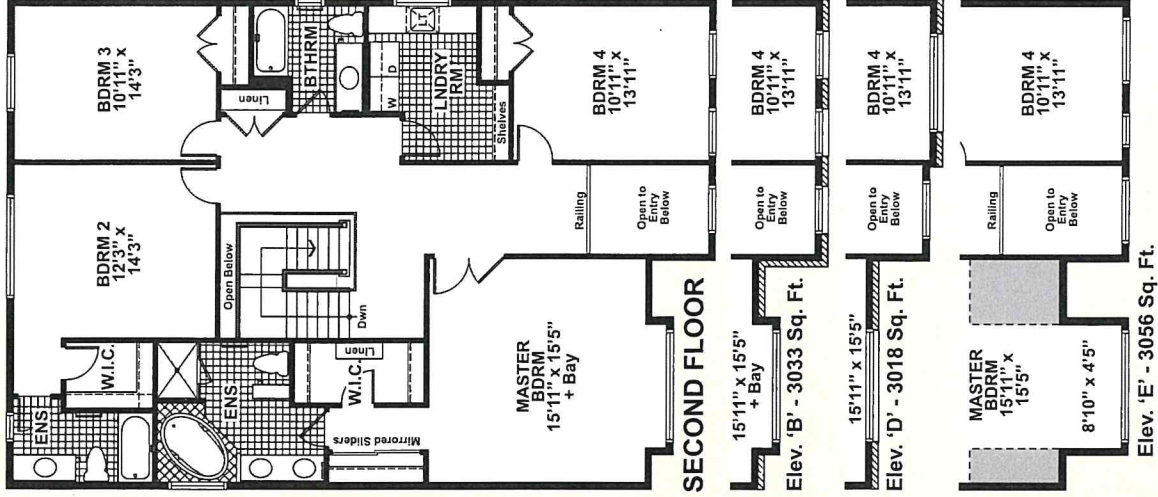
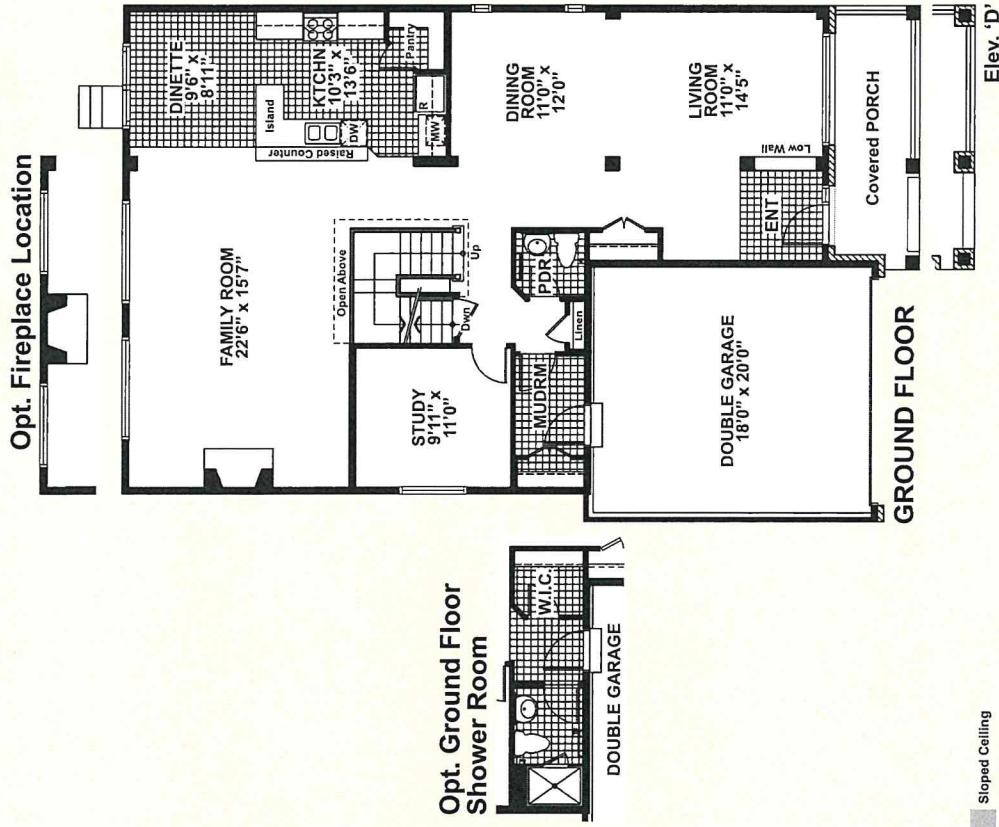


The Oxford

3023 Sq. Ft.

- 45' Single Family Home
- 4 Bedrooms / 3.5 Bathrooms
- 9' ceilings on main floor
- Mudroom provides passage to Double Garage
- Private Study offers an ideal spot for home office
- Centrally located staircase is open concept & finely crafted
- Enormous Family Room highlighted with gas fireplace & large bright windows
- Kitchen includes walk-in pantry, prep island w/ raised bar counter & large Dinette
- 2nd floor hall is wide & offers a fabulous view of Entry below
- Bright & spacious Laundry Room includes rinse tub, folding counter & storage shelves
- Bedroom 2 features W.I.C. & 3 pce Ensuite!
- Master Bedroom incl. W.I.C., double grand entry doors, & luxurious 5 pce Ensuite that features an oval 'Roman' tub



Sloped Ceiling

#4340 E. & O.E. Subject to Change Without Notice. April 3, 2010
Actual usable floor space may vary from the stated floor area.